

Media Distribution System

Voice, Video and Data



PANDUIT[®]

building a smarter,
unified business foundation
Connect. Manage. Automate.



A Flexible Comprehensive Solution

The nature of communication services is changing in both the residential and commercial markets as demand increases for a full range of high-speed data and sophisticated multimedia services, such as HDTV, Broadband, and VoIP phones. These demands, along with the desire to be able to rapidly change and expand services, are creating a burden on communication infrastructures within buildings. Disparate voice, video, and data cabling system installations simply cannot keep up with these changing demands.

The Panduit media distribution system meets the communication needs of multi-dwelling units (such as high-rise condominiums, hotels, and office buildings) by supporting today's applications and tomorrow's opportunities. Using customizable communication hubs deployed within a centralized media enclosure, the Panduit media distribution system provides easy access to all desired services and the flexibility to rapidly change these services.

- Innovative system design provides higher density in less space as compared to similar products
- Modular components provide the flexibility to mix and match triple play services, and to be modified easily as needs change
- Consolidation of all incoming communication cable into one centralized location simplifies installation and troubleshooting and improves the aesthetics of the installation

When combined with Panduit structured cabling and outlet products, the Panduit media distribution system offers a comprehensive solution that supports an entire communication infrastructure – from the building demarcation point to the end user's network outlet.

Panduit's Unified Physical Infrastructure (UPI)

A unified approach to physical and logical systems architecture is imperative for solutions to fully address the need for availability, agility, integration, and security.

Panduit has developed the industry's most comprehensive and holistic approach to a Unified Physical Infrastructure and can help enterprises align, converge, and optimize critical systems – communication, computing, control, power, and security – to build a smarter, unified business foundation.

Unified Physical Infrastructure

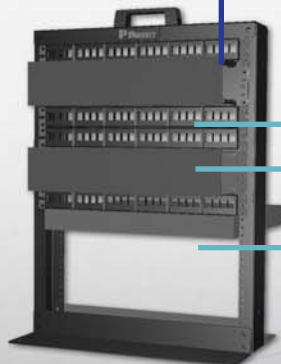




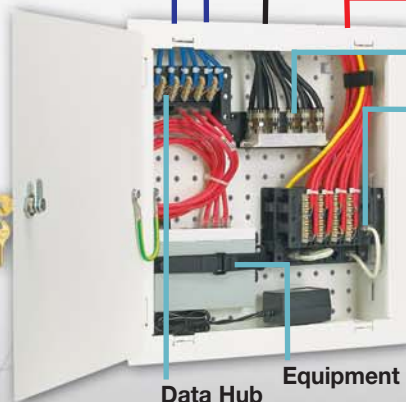
For a complete listing of Panduit distribution frames, cable management, patch panels, etc., visit www.panduit.com

Distribution Frame Installation

Faceplate Installation



- Cable Manager
- Patch Panels
- Switch Router



Typical Configuration

- Video Splitters
- Phone Hubs
- Category 5e/6 Jack for Data
- F-Type Connector

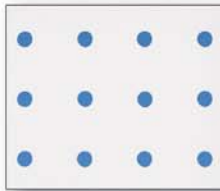


- Category 3 Jack for Phone
- Blank for Future Expansion



Improve Space Utilization

The Panduit media distribution system offers an efficient and scalable means to distribute voice, video, and data services within commercial and residential locations. High density solutions support a greater number of network services and applications allowing improved space utilization while implementing media components. A comprehensive set of modular components improves design flexibility and enables quick modifications and scalability for future growth from the building demarcation point to the end user's network outlet.



Open Mounting Grid Base

One-inch grid pattern across entire enclosure base provides for vertical or horizontal placement of hubs and other components, allowing greater flexibility for installation, and maximum use of available space.



Modular Patch Panel

The media distribution modular patch panel provides a front-accessible patch panel module that accepts voice, video, data, and audio modules to provide communication to up to eight different locations.



Network Equipment Bracket

The media distribution equipment bracket secures third party equipment, such as routers or switches, to the media distribution system enclosure, providing flexibility and choice to meet individual needs.



Stackability

Stackable hubs mount on top of one another to maximize use of enclosure space and offer easy expansion for additional drops.



Phone Hub Test Ports/ Security Interface



Phone hubs include test ports that enable testing of incoming phone lines from the building demarcation point, as well as connections from the enclosure to the residence. Security interface includes a built-in switch that overrides the phone service for emergency notifications, ensuring safety and security of unit or residence when needed.

Cable Management



Through the use of cable management D rings and the cable management kit, the media distribution system provides superior cable management within the enclosure to organize cables for easy access and to maximize enclosed space.



Shear forms built in to the enclosure work with the cable management kit for appropriate cable management.

Grounding and Bonding



Integrated grounding stud, along with optional grounding kit, provides means to properly ground the enclosure to the surrounding structure, protecting network equipment, and maximizing uptime.



Media Distribution Enclosures

With an attractive modern appearance that suits any interior, the enclosure offers easy installation, flexibility for quick modifications, and scalability for future growth needs.

- Complete enclosure requires base and cover or door; basic enclosure includes base and screw down cover; advanced enclosure base can be used with framed hinged door or frameless hinged door to allow custom configuration
- 1" grid pattern in base provides mounting and flexibility for the hubs
- Includes multiple 2.5" knockouts at top and bottom for cable entry and exit
- Includes two single gang power knockouts
- Cantilever mounting slots flex to accommodate misaligned studs
- Shear forms along sidewalls help route and secure cables in place
- Includes drywall positioning slots
- Dual hinged doors allow doors to open to the left or to the right
- Hinged doors allow easy access to components; keyed locks keep components secure and prevent tampering
- Hinged door overlaps base to cover any wall imperfections; framed hinged door covers imperfections even when opened



MSB14E



MS14B



MS14HD



MS24BHD

Part Number	Part Description
Basic Enclosures	
MSB14E	14" x 14" media distribution basic enclosure. Includes enclosure base and screw down cover. 14.25"H x 14.25"W x 4.00"D (362.0mm x 362.00mm x 101.6mm).
MSB24E	14" x 24" media distribution basic enclosure. Includes enclosure base and screw down cover. 24.25"H x 14.25"W x 4.00"D (616.0mm x 362.00mm x 101.6mm).
Advanced Enclosure Bases	
MS14B	14" x 14" media distribution enclosure base. 14.25"H x 14.25"W x 4.00"D (362.0mm x 362.00mm x 101.6mm).
MS24B	14" x 24" media distribution enclosure base. 24.25"H x 14.25"W x 4.00"D (616.0mm x 362.00mm x 101.6mm).
Hinged Doors	
MS14HD	14" x 14" framed hinged door with lock and key. 15.81"H x 15.75"W x .87"D (401.6mm x 400.00mm x 22.1mm).
MS24HD	14" x 24" framed hinged door with lock and key. 25.81"H x 15.75"W x .87"D (655.6mm x 400.00mm x 22.1mm).
MS14BHD	14" x 14" frameless hinged door with slam latch. Optional lock and key can replace slam latch. 15.75"H x 15.75"W x 0.63"D (400mm x 400mm x 15.9mm).
MS24BHD	14" x 24" frameless hinged door with slam latch. Optional lock and key can replace slam latch. 15.75"H x 25.75"W x 0.63"D (400mm x 654mm x 15.9mm).

Base and door for advanced enclosures sold separately. All product color is White.

Media Distribution Voice (Phone) Hubs

Voice hubs split up to four incoming phone lines to provide basic phone, fax, and modem services for up to eight locations (per line) in a facility – expandable up to another eight phone connections with an expansion hub.

- Offer phone override services to transmit safety alarms in the event of an emergency for added home security and protection through built-in security interface
- Offer built-in cable mounts to help organize and route cable
- Stackability feature saves space and increases the density of an installation
- Test ports show verification of service installation
- Snap directly onto grid patterns within enclosures to simplify installations and allow easy moves, adds, and changes



MS8PD



MS8PE

Part Number	Part Description
MS8PD	Phone distribution hub with test ports and a security interface.
MS8PE	Phone expansion hub.

Media Distribution Patch Panels

The patch panel provides a front accessible patch panel module for use with interchangeable modules within an enclosure, offering the ability to add or replace modules as needed.

- Accept modules for Category 6, Category 5e, fiber optic and audio/video applications
- Snap directly onto grid patterns within enclosures to simplify installations and allow easy moves, adds and changes



MS8PP



NKM8PP

Part Number	Part Description
MS8PP	8-port modular patch panel for Mini-Com® connectivity.
NKM8PP	8-port modular patch panel for NetKey® connectivity.

Media Distribution Video Splitters

Video splitters distribute incoming video/coax lines to deliver high-quality signals throughout a building for optimum performance and capacity for future growth.

- Pre-mounted onto metal bracket for quick installation
- Snap directly onto grid patterns within enclosures to simplify installations and allow easy moves, adds, and changes
- Include bonding screws for proper grounding



MS4S2G



MS8S2G

Part Number	Part Description
1 GHz Splitters	
MS4S1G	Media distribution 1 x 4 passive video splitter with 1 GHz performance to distribute high-quality RF signals to up to four outputs.
MS8S1G	Media distribution 1 x 8 passive video splitter with 1 GHz performance to distribute high-quality RF signals to up to eight outputs.
2 GHz Splitters	
MS4S2G	Media distribution 1 x 4 passive video splitter with 2 GHz performance to distribute high-quality RF signals to up to four outputs.
MS8S2G	Media distribution 1 x 8 passive video splitter with 2 GHz performance to distribute high-quality RF signals to up to eight outputs.

Media Distribution Data Hub

Data hub delivers Category 5e data connectivity. Designed with front-side 110 punchdowns, the data hub allows for fast and effective terminations, and easy access to connections within the enclosure.

- Angled design enables proper bend radius control
- Allows for fast and effective terminations
- Offers built-in cable mounts to help organize and route cable
- Stackability feature saves space and increases the density of an installation
- Snaps directly onto grid patterns within enclosures to simplify installations and allow easy moves, adds, and changes

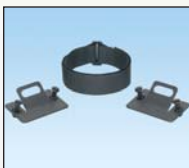


MS5E6PP

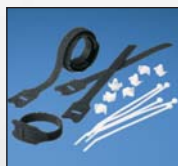
Part Number	Part Description
MS5E6PP	Media distribution data hub for up to six different locations.

Media Distribution Accessories

Accessories complement the enclosure installation with products that provide proper mounting, installation of third-party modules, and much more.



MSEBRKT



MSCM-KIT



MSGRD-KIT



MSCLK



MSCMR

Part Number	Part Description
MSEBRKT	Media distribution equipment bracket that allows a variety of third-party equipment to be securely mounted within an enclosure.
MSCM-KIT	Media distribution cable management kit that includes the necessary components to help manage cables.
MSGRD-KIT	Media distribution grounding kit that includes necessary components to help ground media distribution.
MSCLK	Lock for frameless hinged door.
MSCMR	Cable management D ring.

Real-World Solutions to Ensure the Success of Our Customers

With a proven reputation for excellence and technology innovation, a robust ecosystem of global partners, and long-term alliances with top industry leaders, Panduit is a valuable, trusted partner offering strategic vision and real-world solutions to ensure the success of our customers.



Innovative Technology Leadership

Panduit is an industry leader in developing innovative technology solutions that meet the rapidly evolving needs of our customers around the world. Our commitment to continued leadership is supported by significant ongoing investment, dedicated manufacturing facilities, strategic technology alliances, and collaborative R&D with other industry leaders.



Global Business & Commitment

Panduit's ongoing commitment to excellence and our technology alliances with key industry leaders such as Cisco Systems, EMC, Emerson, and IBM enables our highly skilled and knowledgeable global sales, systems engineering, and technical support teams to engage with critical customer challenges that range from initial problem determination all the way to resolution. Local specialists, trained to global standards and competencies, provide consistent regional support that brings value to local business. Our global value chain, which combines manufacturing, distribution, and service, provides prompt responses to customer-related issues, and streamlines procurement and delivery to any global destination.



Best-In-Class Partner Ecosystem

Panduit employs a consultative approach to identify customer needs and engage appropriate partners in a collaborative fashion to serve our customers. Panduit's robust ecosystem of architects, consultants, engineers, designers, systems integrators, contractors, and distributors offer a full portfolio of lifecycle services. Our partners are trained on relevant services to Plan & Design, Build & Deploy, and Maintain & Operate to deliver predictable and measurable results.



Worldwide Alliances

Panduit has established long-term strategic alliances with top global industry leaders such as Cisco Systems, EMC, IBM, and Rockwell Automation to develop and integrate innovative, holistic solutions for our customers. We continually invest in relationships and resources for solving our customers' greatest business challenges.



Eco-Sustainability & Global Citizenship

With a long-standing commitment to environmental excellence, Panduit continually develops and implements solutions designed to protect, replenish, and restore the world in which we live and operate. This commitment is demonstrated by Panduit's LEED Gold certified new world headquarters and future sustainable building plans using its own revolutionary Unified Physical InfrastructureSM approach to enable convergence of critical systems for driving energy efficiency.

Panduit Corp.
World Headquarters
Tinley Park, IL 60487

cs@panduit.com

US and Canada: 800.777.3300

Europe, Middle East, and Africa:

44.208.601.7200

Latin America: 52.33.3777.6000

Asia Pacific: 65.6305.7575

www.panduit.com

PANDUIT[®]